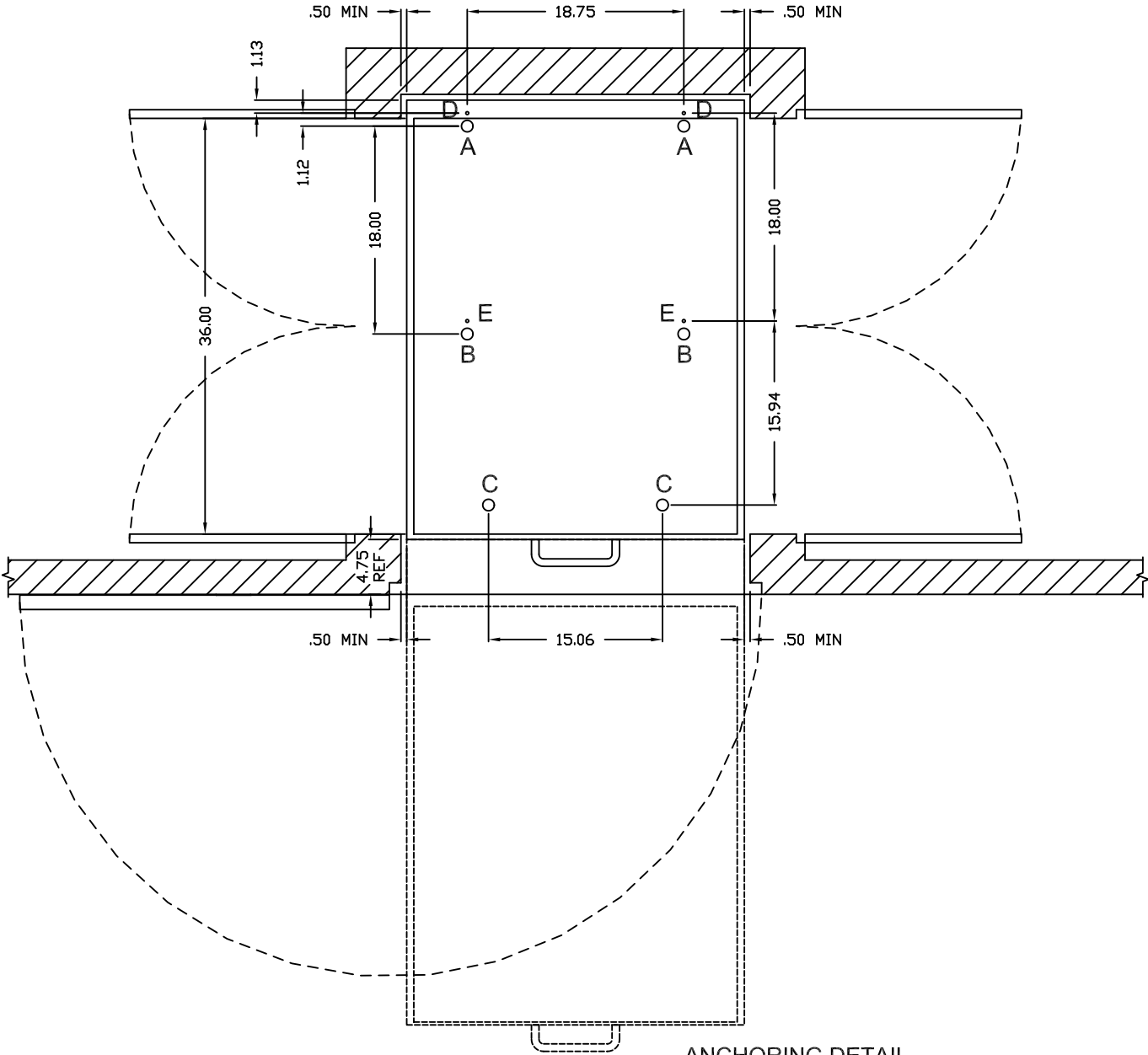


DWG NO.			SH	REV	1	
REVISIONS						
ECO NO.	ZONE	REV	DESCRIPTION			DATE
						APPROVED

ENCLOSURE CONSTRUCTION GUIDELINES

- NOTES:
- 1.) CABINET/CLOSET AND MOUNTING SURFACE BY OTHERS.
 - 2.) LOCAL FIRE CODES MAY APPLY. THE RESPONSIBILITY TO ENSURE APPLICABLE CODES HAVE BEEN MET IS THAT OF OTHERS.
 - 3.) DOORS, WALLS, AND WALL THICKNESSES SHOWN ARE FOR ILLUSTRATIVE PURPOSES ONLY. ACTUAL DIMENSIONS TO BE FINALIZED BY OTHERS.
 - 4.) DIMENSIONS SHOWN ARE TO PROVIDE FINISHED OPENING SIZES ONLY AND INCLUDE RECOMMENDED MINIMUM CLEARANCES. (DIMENSIONS SUBJECT TO CHANGE WITHOUT NOTICE.)



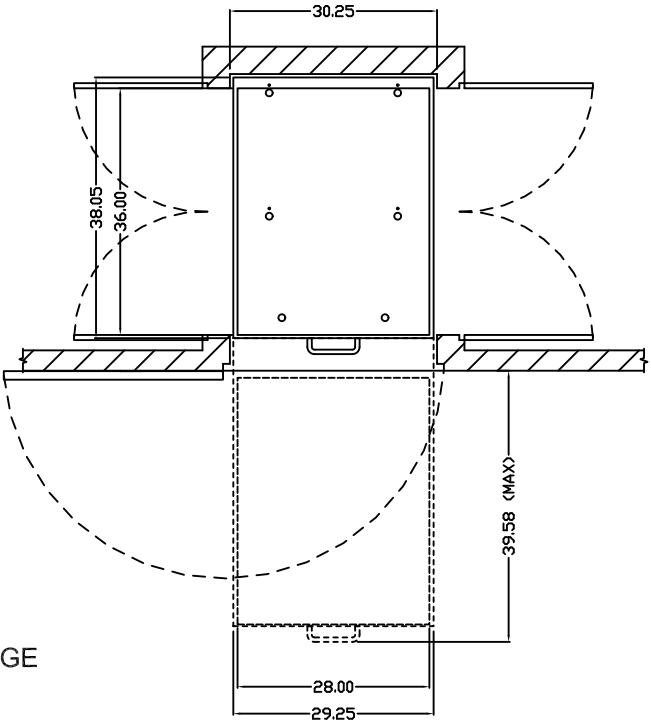
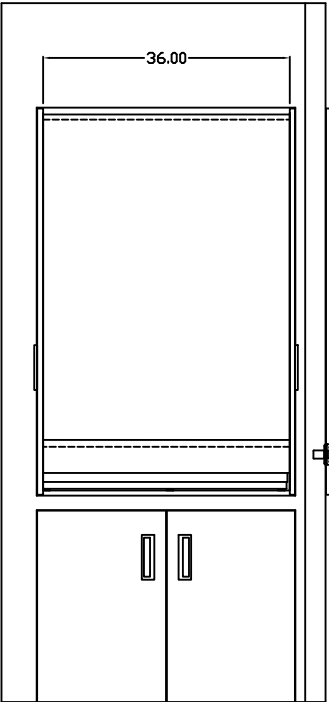
ANCHORING DETAIL
SCALE 2:1

FORCES AT BOLT POINTS & FOOT POINTS

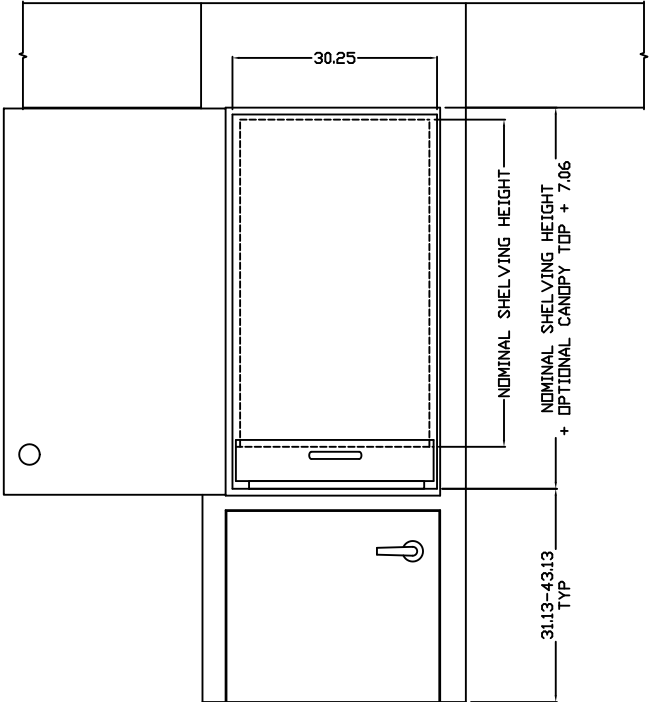
SYSTEM CONFIG	CARRIAGE WIDTH	CARRIAGE LENGTH	*WORST CASE* FORCE REQUIREMENTS				
			LEVELER 'A' SUPPORT	LEVELER 'B' SUPPORT	LEVELER 'C' SUPPORT	ANCHOR 'D' (PULL OUT)	ANCHOR 'E' (PULL OUT)
DUAL ENTRY SINGLE CARR	28"	24"	400#	74#	900#	350#	650#
	28"	30"	400	74	900	350	650
	28"	33.7"	400	74	900	350	650
	28"	36"	400	74	900	350	650

*FORCES CALCULATED PER BOLT
(SHELF WEIGHT = 15lb/ft LENGTH-WIDTH, UNIFORMLY DISTRIBUTED)
ANCHORS TO BE Ø 5/16"-18 GRADE 5 THREADED BOLTS
DO NOT USE WOOD AS A MOUNTING SUBSTRATE TO AVOID LONG TERM INDENTING

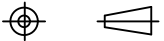
DOUBLE SIDED
SINGLE 28 x 36 BASE UNIT CARRIAGE



FINISHED OPENING



TOLERANCES UNLESS OTHERWISE SPECIFIED
.XX±.01
.XXX±.005
X°±1°



DWN BY SRI DATE 1/26/09
APVD DATE

Spacesaver
FORT ATKINSON WISCONSIN

TITLE
CoreSTOR™ PATIENT SERVER
DOUBLE SIDED 28 X 36 GUIDE

SIZE D FSCM NO. 58928 DWG NO. CoreSTOR DS 28x36 REV A
SCALE NTS SHEET OF

COPYRIGHT © 1999 SPACESAVER CORPORATION. ALL RIGHTS RESERVED.
This material is proprietary and confidential, and the disclosure, reproduction (by photocopy, film, blueprint, or otherwise) or incorporation into any information retrieval system without first receiving written approval from Spacesaver Corporation is expressly prohibited by law.